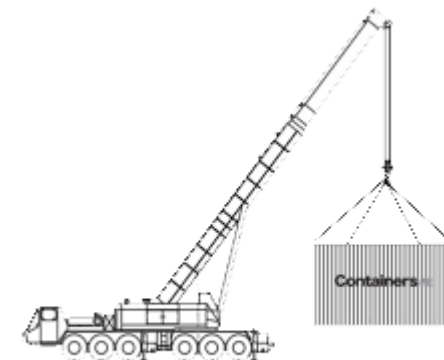


PROFILE & PROJECTS PORTFOLIO



CONTAINERS MIDDLE EAST FZCO

Doc# 3135MR101-1.0 dated 25/06/2024

DESIGNED FOR

Site Offices

Living Rooms

Toilets

Camps

F&B Units

Medical Units

Stores / Retail Outlets

Mosque / Prayer Halls

Bus Stops

Waiting Rooms

Mess Halls

Exhibition Booths

NAME IT, WE DELIVER

“CONTAINERS ME” IN A GLANCE

We are a young company who has risen to a market-leadership position driven by our belief in the “power to change”. This is the belief that has enabled us to reach great heights. Business landscapes in the region and the world at large are changing rapidly, and we fully understand the market’s evolving needs. That’s why we lay great emphasis on continuous innovation, working in partnership with our clients to meet their requirements with quality, on-time solutions.

We are specialists in providing fast and flexible modular business space. Our world-class German technology with focus on sustainability, maximum functionality with minimum maintenance, and ready-to-use customized solutions make

From designing to manufacturing and beyond, we adhere to international standards, adapted to local regulations. This combined with a strong customer orientation and swift response to market changes, enables us to ensure total customer satisfaction every step of the ways us the most sought-after venue-solutions provider.



WHY CME??

- ❑ German Technology
- ❑ Strong Structure.
- ❑ Fast Installation.
- ❑ Cost Effective & Flexible combination.
- ❑ Plug and play, fully equipped.
- ❑ Suitable for all industries.
- ❑ Long term Solution.
- ❑ Quick changes of layout.
- ❑ Stackable up to the second floor.
- ❑ Sustainable Product.
- ❑ Reducing of energy consumption.
- ❑ Easy to dismantle and moveable.
- ❑ Many customizing options.

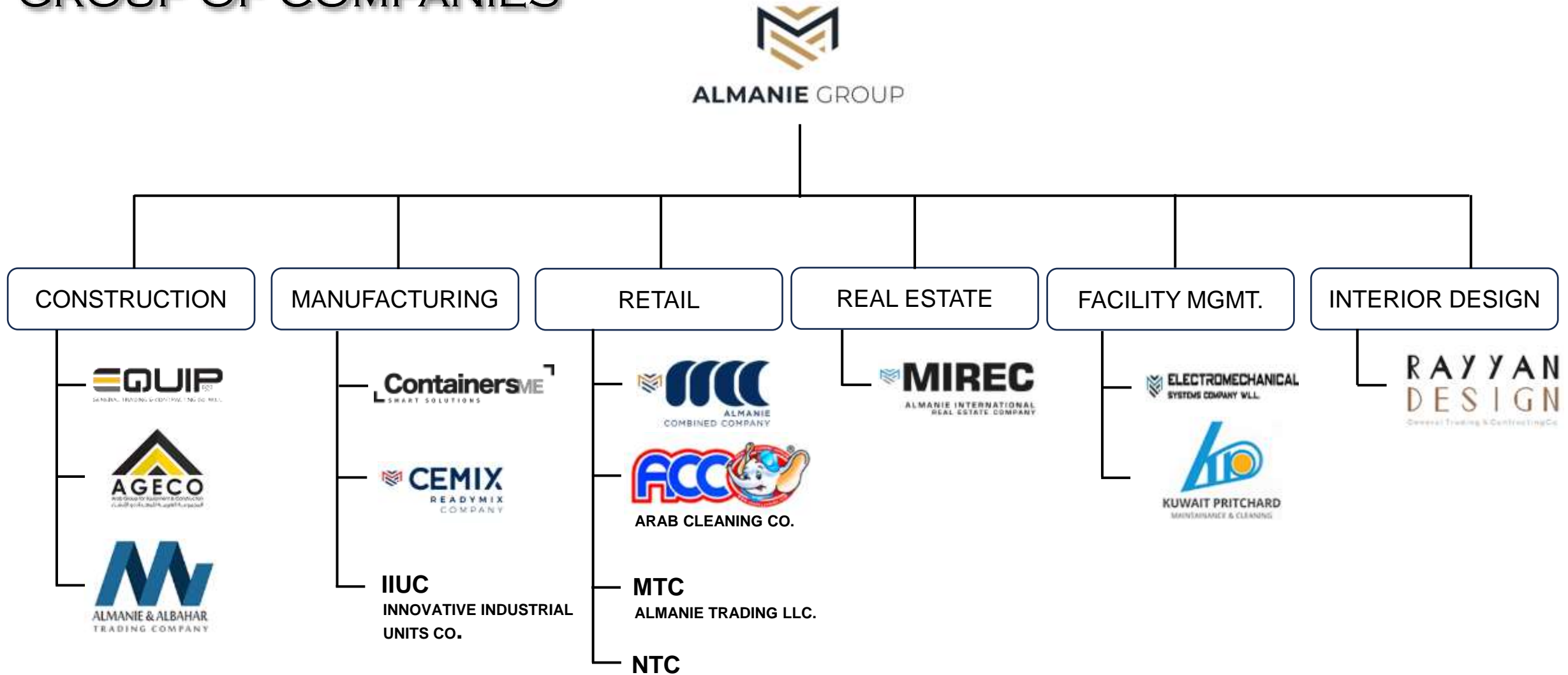


KEY HIGHLIGHTS

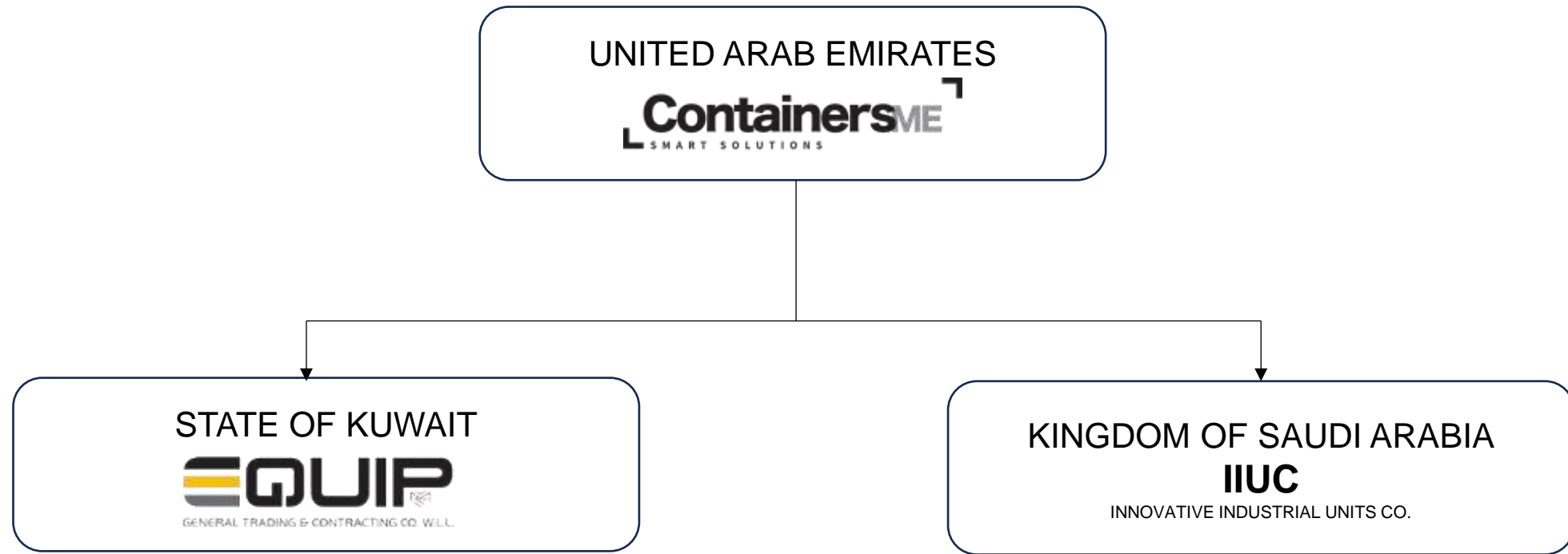
- ❑ Active in Middle East since 2016.
- ❑ Individually designed modular rooms.
- ❑ Able to erect and modify 40-50 units/week.
- ❑ Rental/Sell of modular smart solutions which are suitable for all kind of businesses.
- ❑ Versatile customization.
- ❑ 24/7 after sale service.
- ❑ Stock availability all the time.



GROUP OF COMPANIES

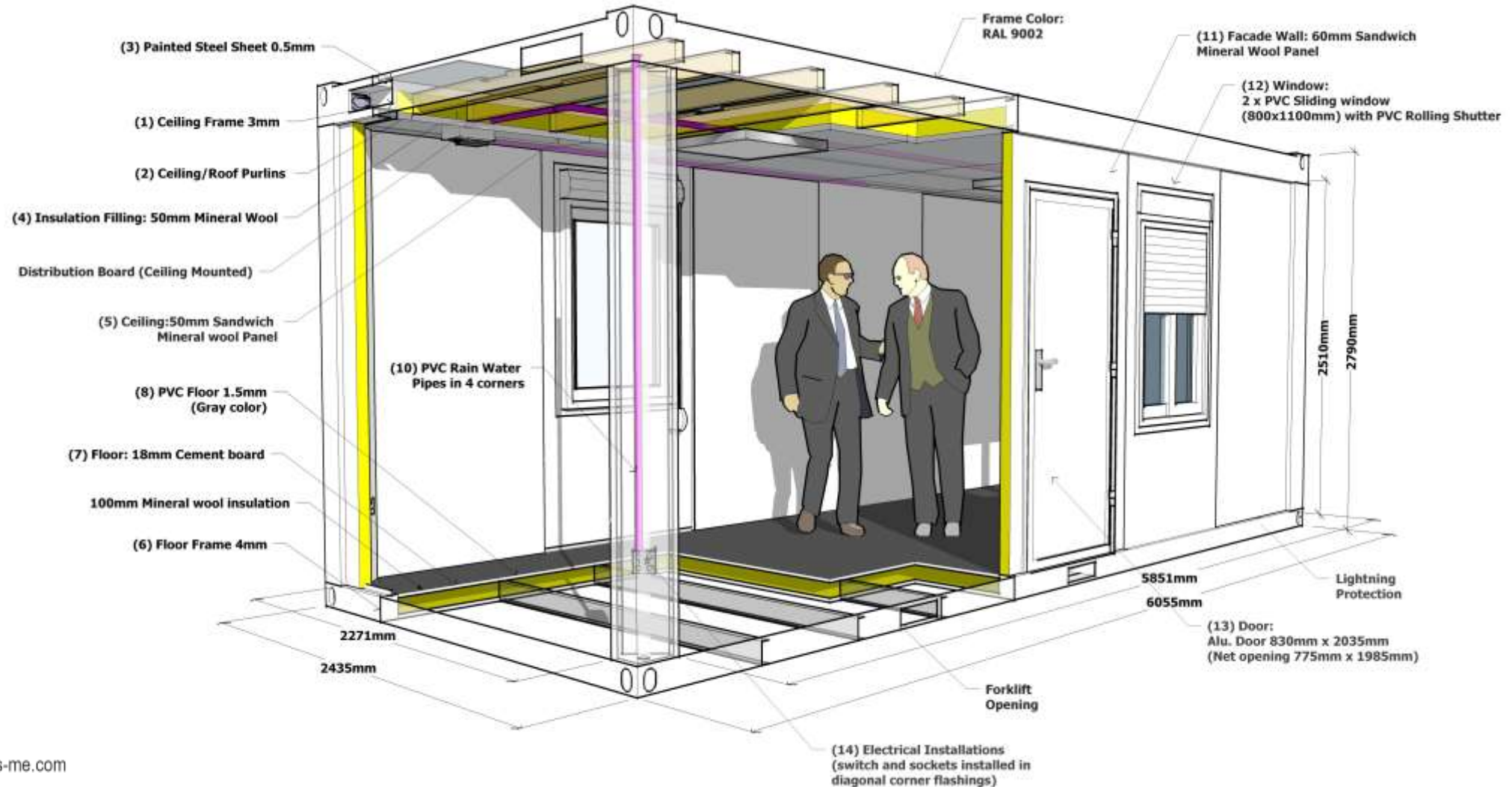


BRANCHES FOR MODULAR ROOM SOLUTIONS



STRUCTURE & SPECIFICATION MAP

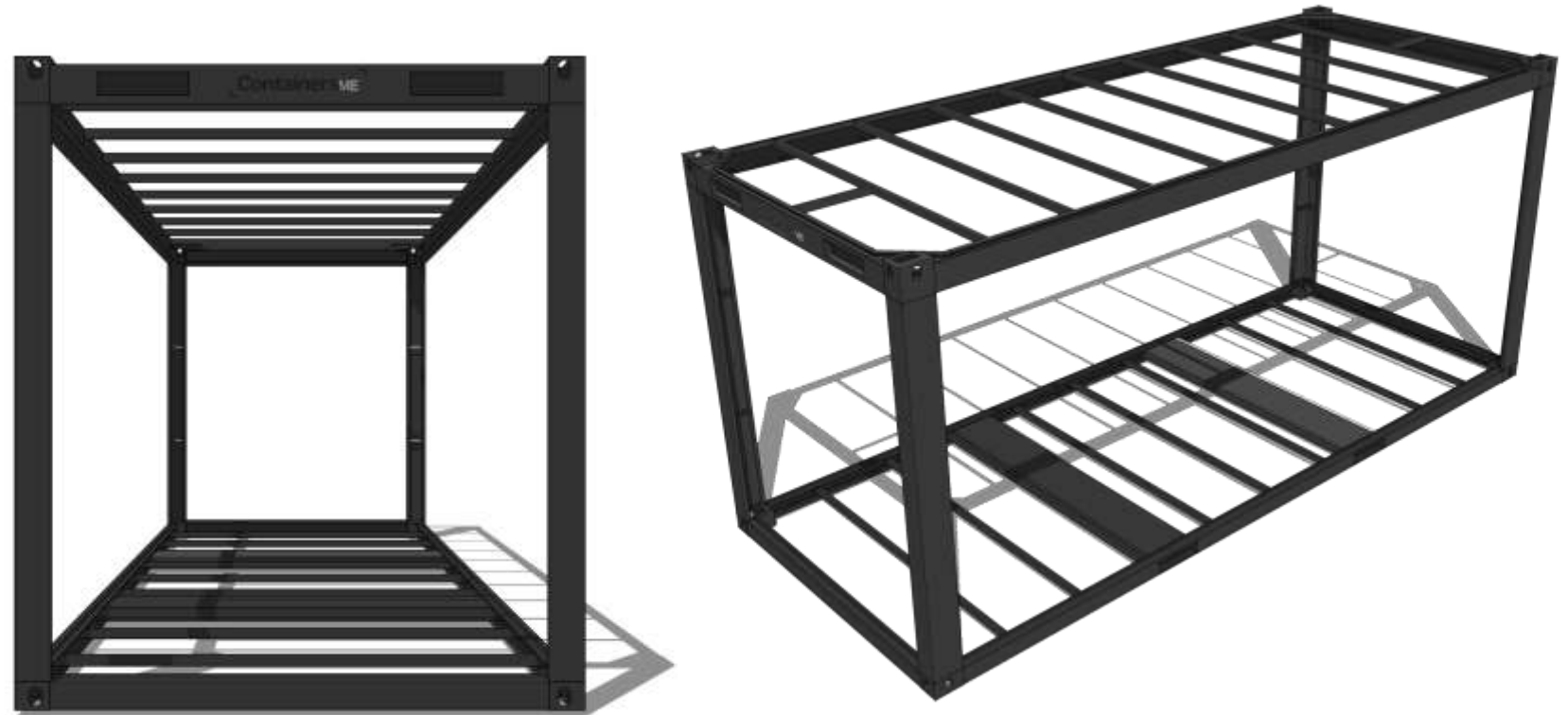
STANDARD 20' MODULE



SKELETON

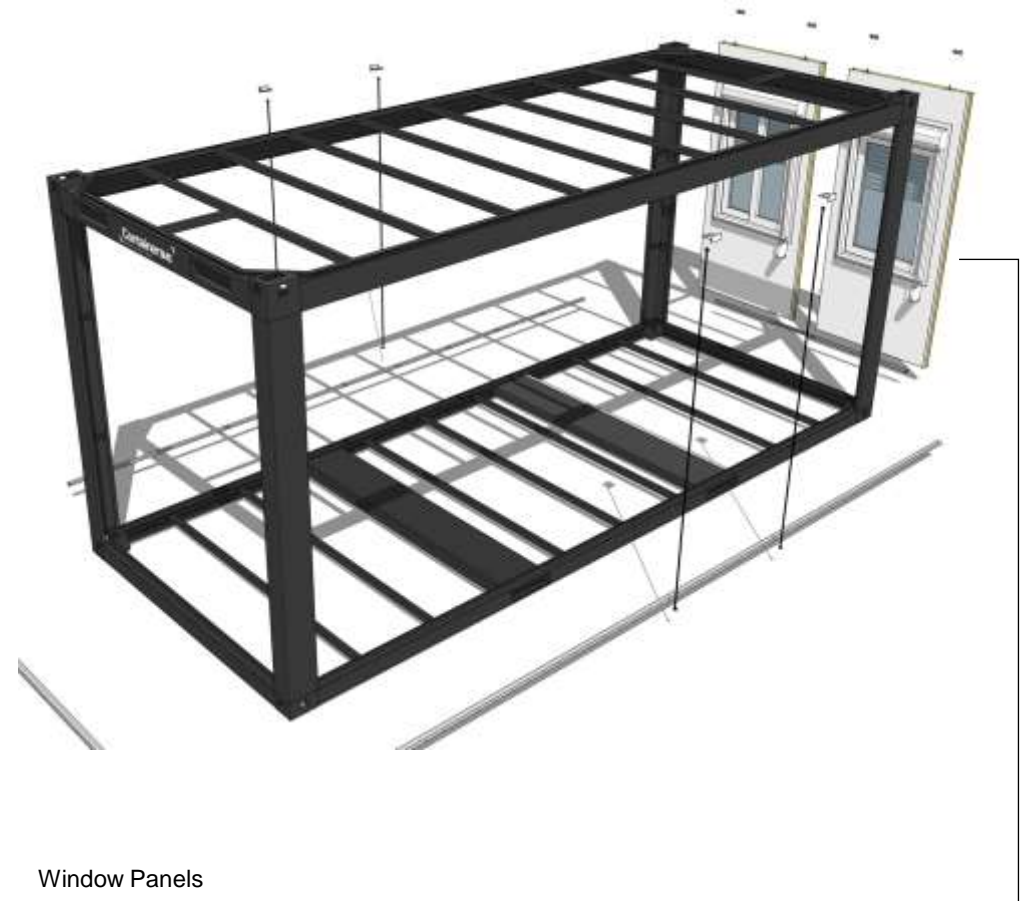
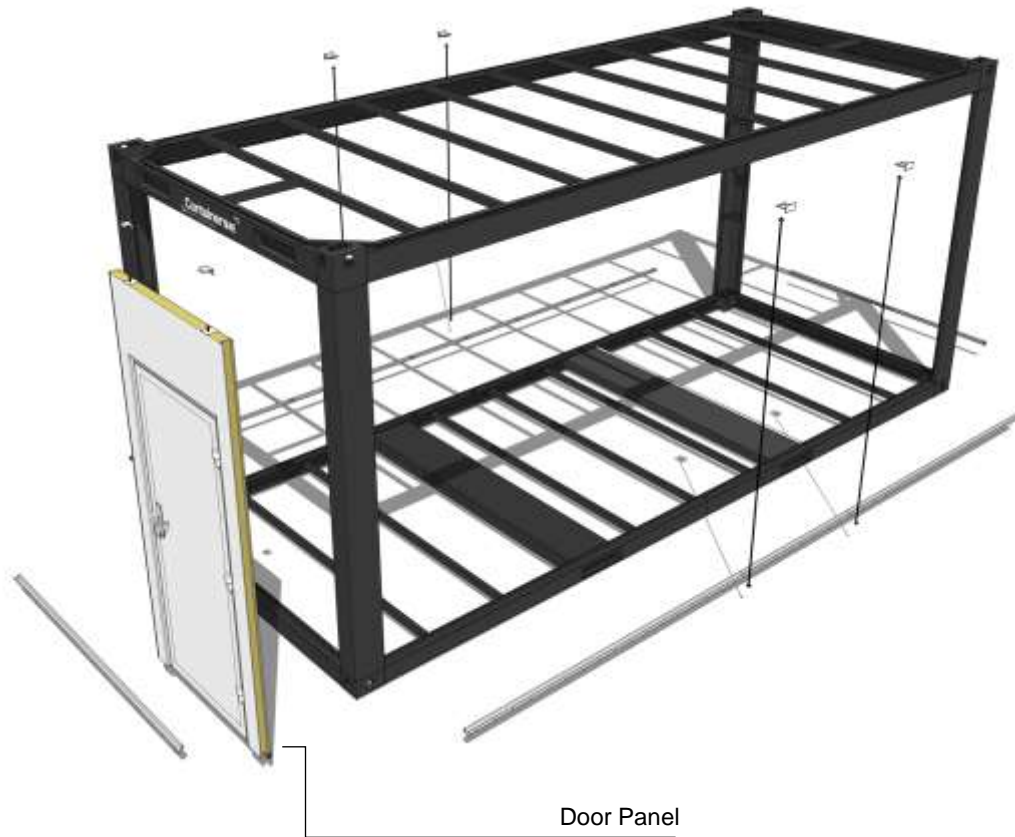
20' STANDARD SKELETON

- All Dimensions based on 20' ISO Shipping Container
- 6055 x 2435 x 2790
- Steel Framework made from Hot Rolled Steel
- 8 Lifting corners, ISO 1161
- Stack ability up to G+2 Levels
- Loading Capacity on Floor 450 kg/m³
- Loading Capacity on Floor 650 kg/m³ (Re-enforced)
- Forklift pockets for handling
- Accessible roof capacity, 200 kg/m³



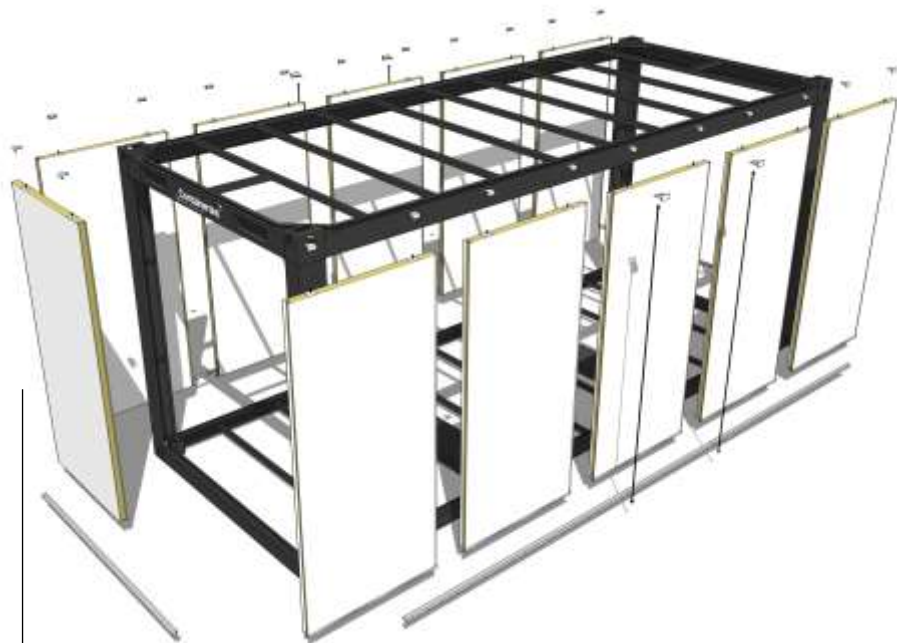
WALL PANELLING

INTERCHANGEABLE WALL PANELS

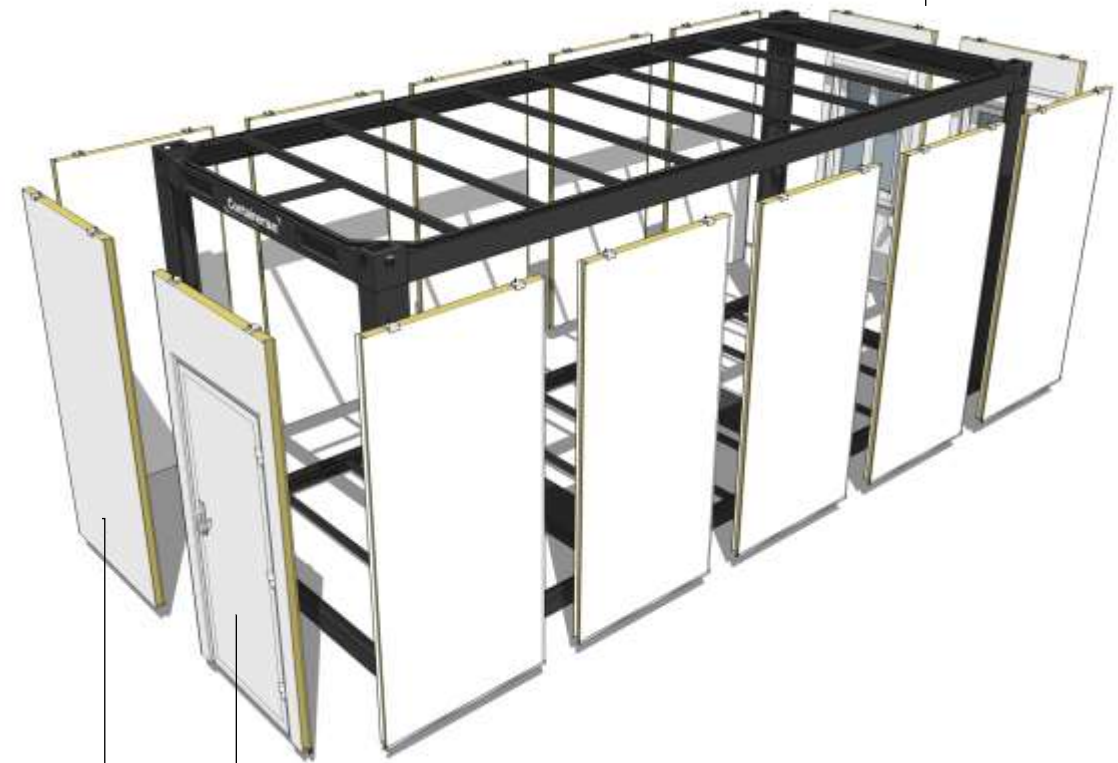


WALL PANELLING

INTERCHANGEABLE WALL PANELS



Plain panels

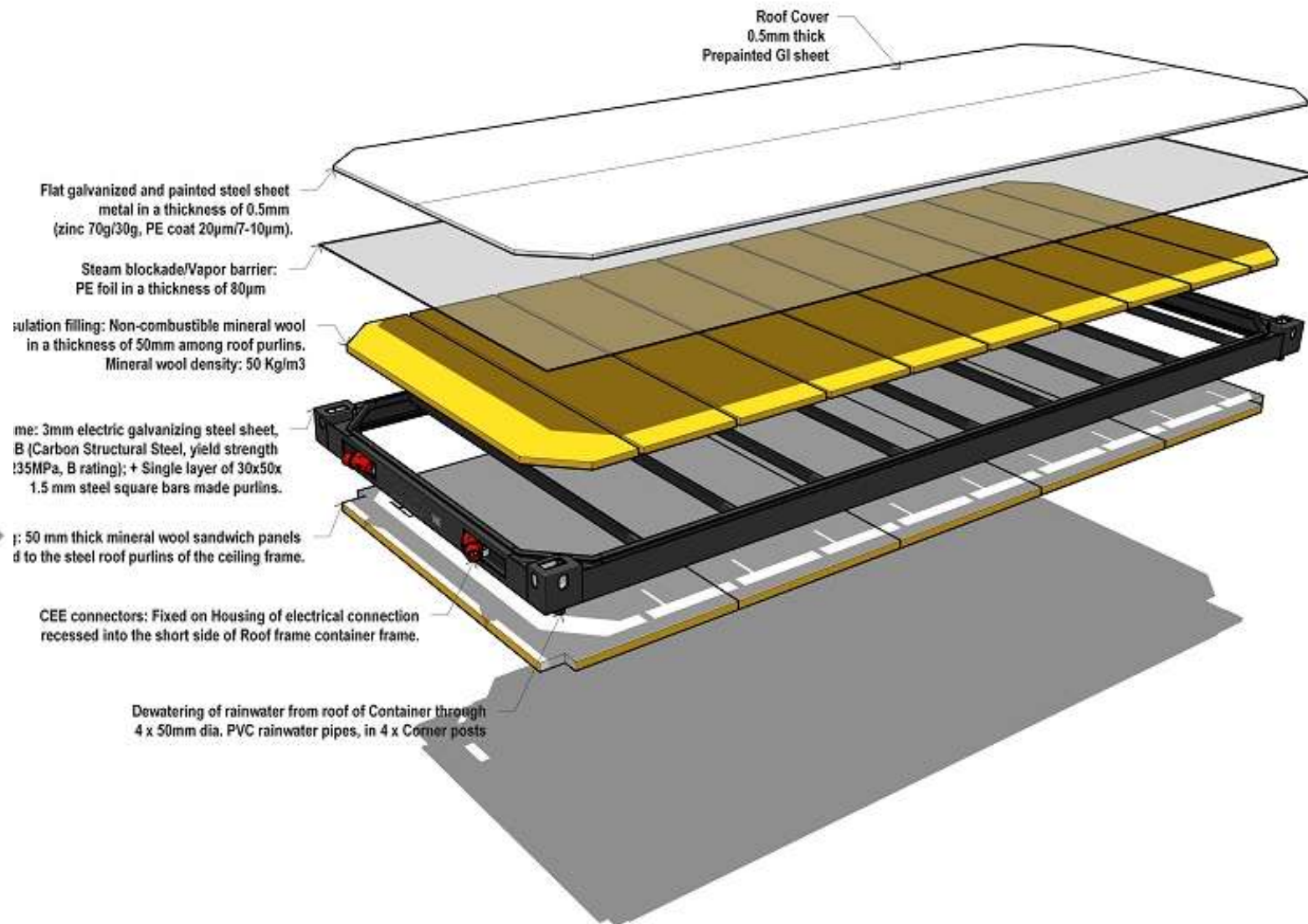


COMPLETE PANEL ASSEMBLY

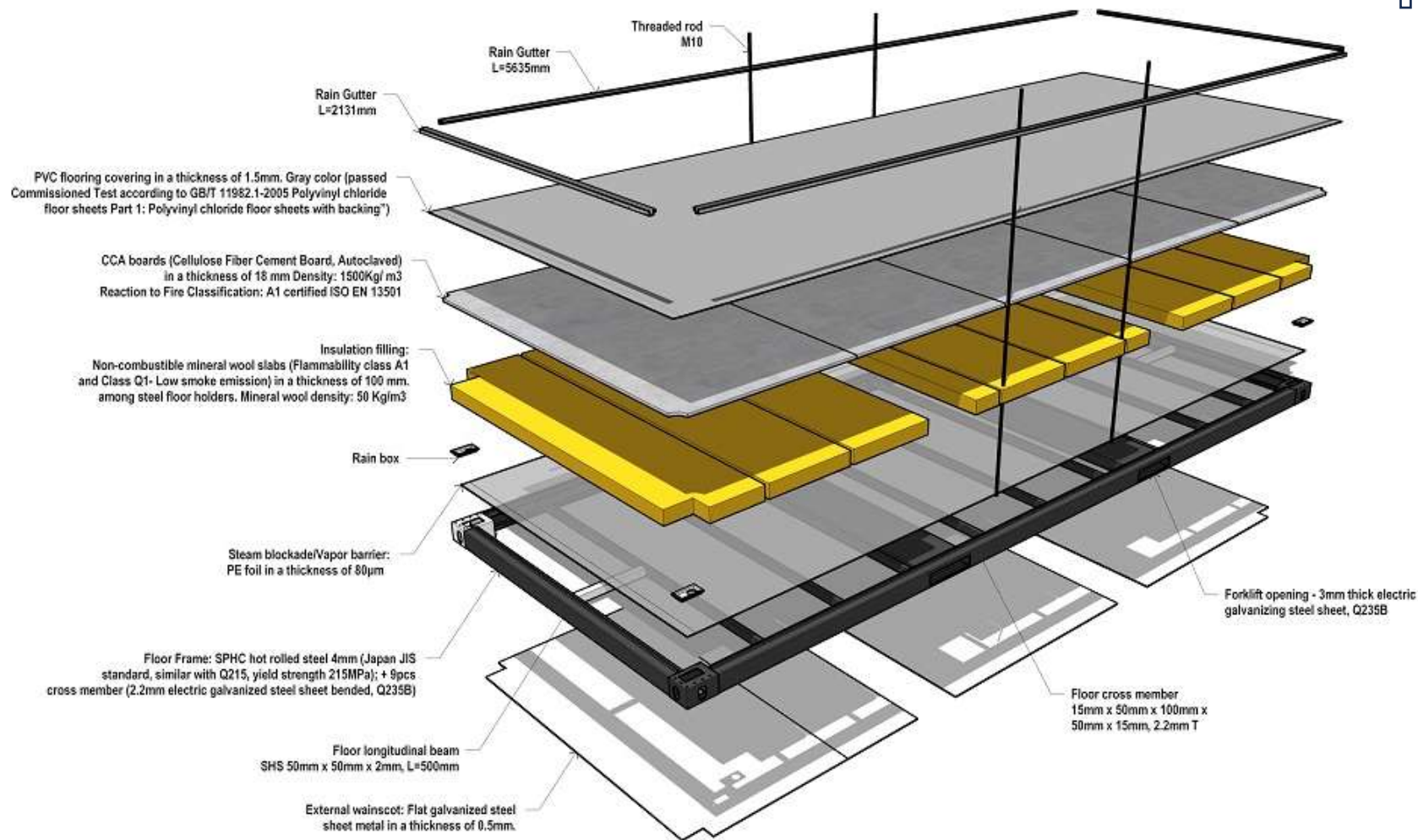
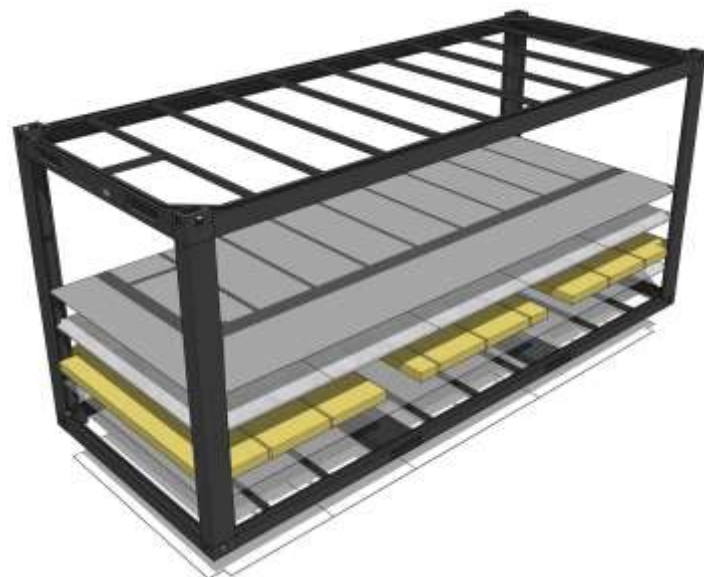
- 01 X Door Panel
- 02 x Window Panels
- 11 x Plain Panels

14 x Panels, Total

ROOF ASSEMBLY

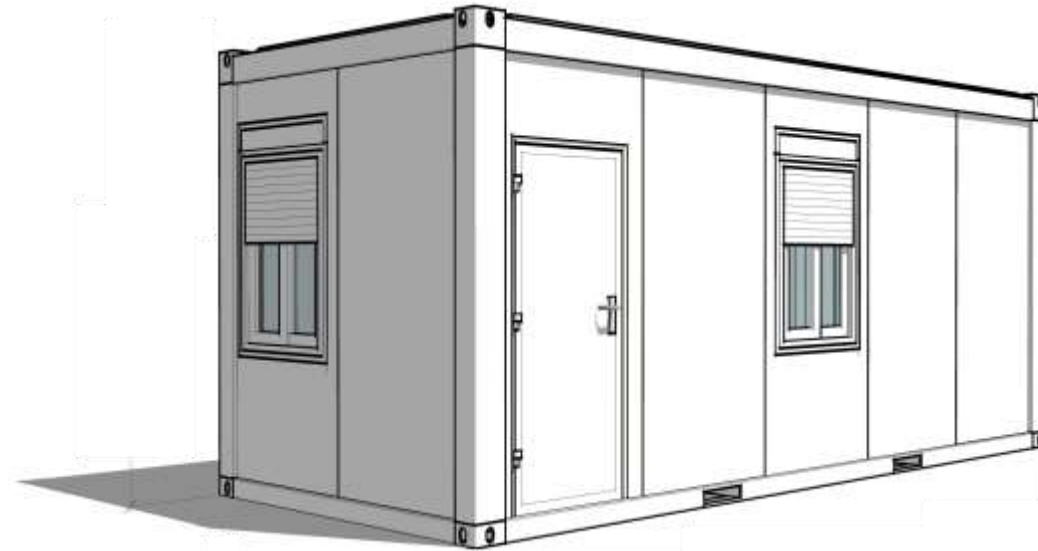


FLOOR ASSEMBLY



COLOUR CHART

STANDARD COLOR



**ALL STANDARD CUSTOMIZED COLORS ARE AVAILABLE
RAL / PANTONE**



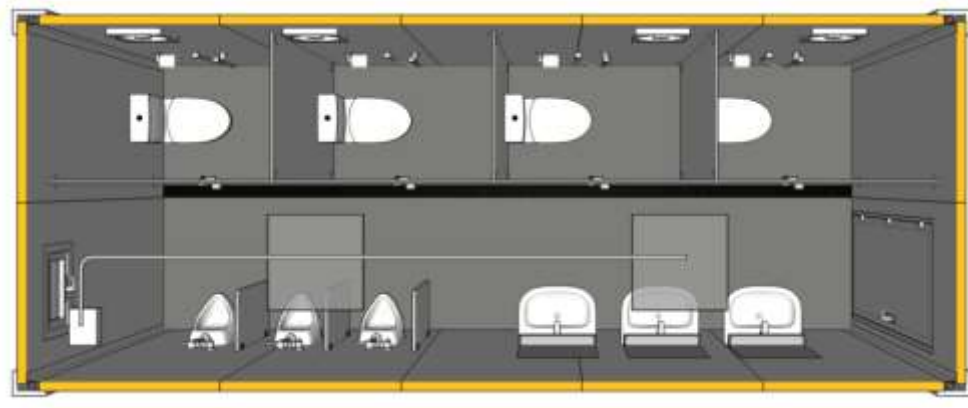
VERSATILE DESIGN CONCEPTS



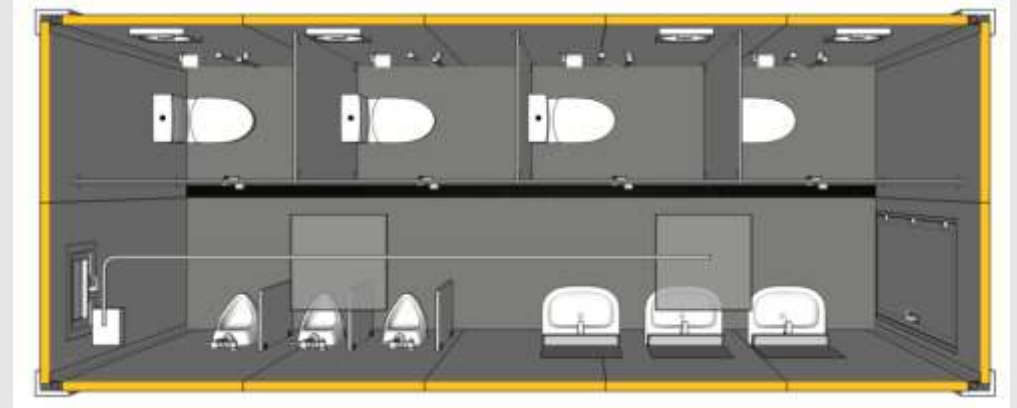
INHOUSE ENGINEERING



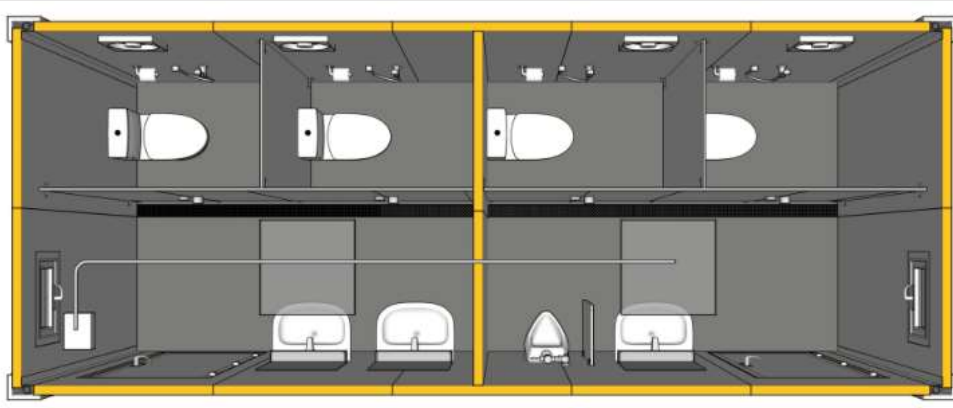
TOILET DESIGNS



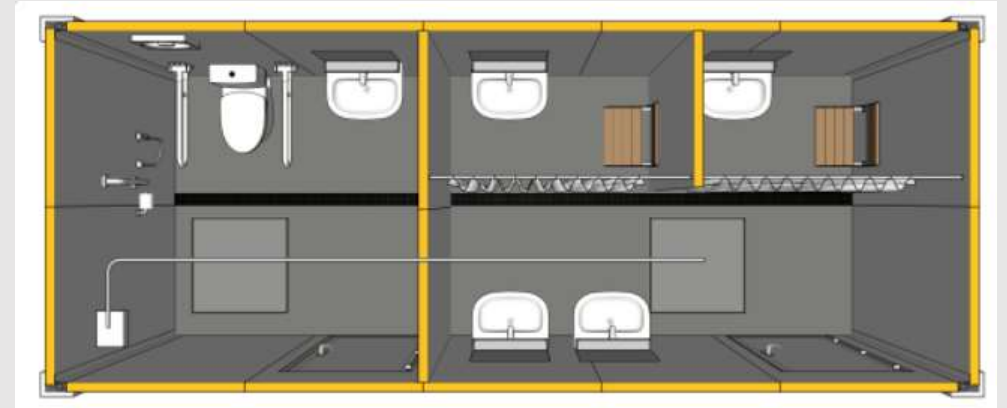
Toilet Male



Toilet Female

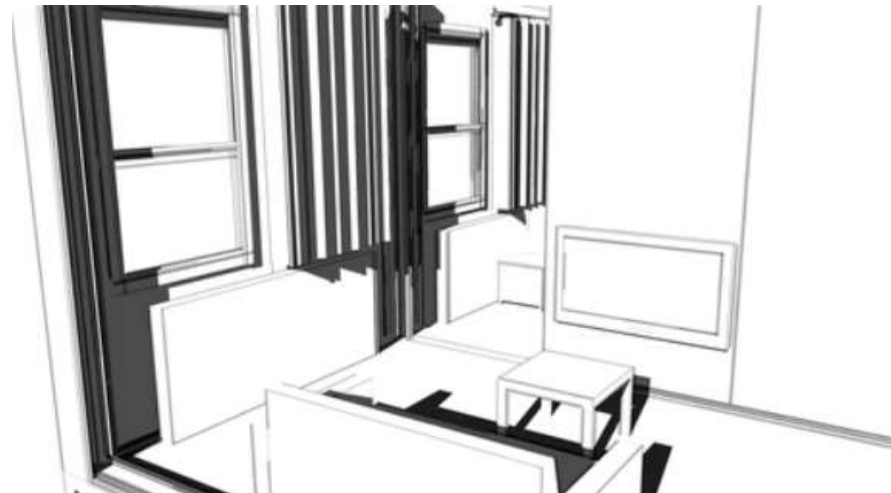
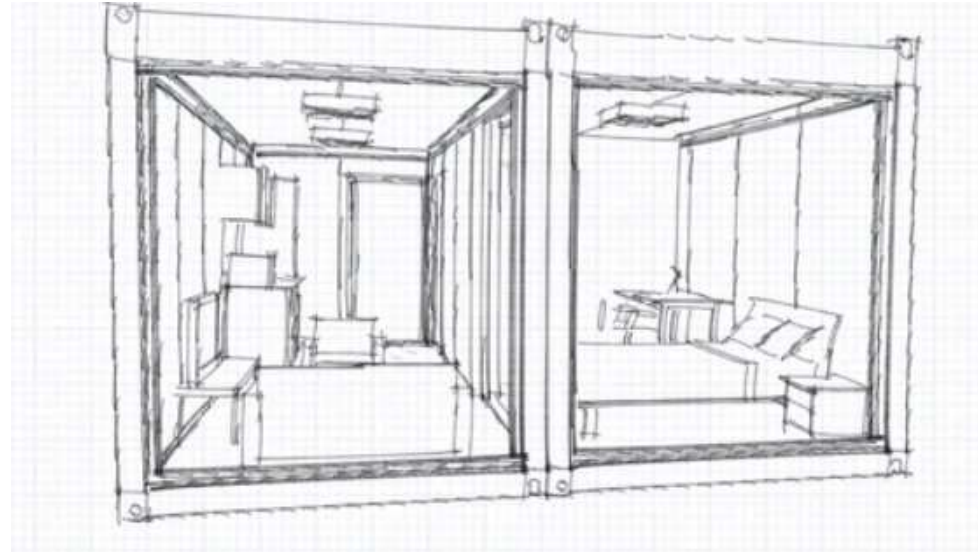


Toilet Male - Female



Toilet Disabled + Baby Changing

CME PROJECTS



SITE OFFICE

SIX CONSTRUCT LTD CO.

DUBAI UPTOWN TOWER, JLT

Key Facts

Six Construct, a subsidiary of the BESIX Group, is the largest Belgian construction company operating in the Middle East. The company currently employs a workforce of 16,000 in the Middle East and a total of 19,000 worldwide. This Site office was delivered in 3 phases.

Area

2265m² 151 units

Room solutions

G+1 Site office





**INNER
FINISHES**

OFFICE COMPLEX

ALEC LLC

DUBAI HILLS MALL

Key Facts

Containers ME worked closely with the client to devise a design which suited the dynamic working of a construction office whilst supplying the necessary amenities. To realize the design Containers Middle East FZCO supplied a compact construction site office complete with meeting rooms, open workspace, kitchen and lavatories.

Area

225 m2

Room solutions

Construction site office



SITE OFFICE

AL FAHIM GROUP

MAFRAK, ABU DHABI

Key Facts

Al Fahim required a permanent office structure which can be flexible enough to enable them to change and adapt the workspace with the growth of the company, Containers ME provided them a two-story office space complete with kitchen, meeting rooms and welfare facility's which can be easily adapted to suit their future requirements.

Area

300 m2

Room solutions

Permanent site office with welfare facilities



MULTI PURPOSE CABINS

DUBAI WORLD TRADE CENTER

INTERNAL USE

Key Facts

The Dubai World Trade Centre exhibition center had a requirement for a “Contractors Prayer and Sanitary Solution”. Containers ME placed sanitary units with ablution and a prayer room with an integrated PPE shop.

Area

90 m2, 6 Units

Room solutions

Prayer Hall, Sanitary Facilities, X-ray scanning facility, Ticket Counters.



MARINE TRANSPORT STATION

**ROADS & TRANSPORT AUTHORITY
GOVERNMENT OF SHARJAH**

Key Facts

The Sharjah Road and Transport Authority had a requirement for a “Ferry Terminal Station” to start the Ferry between Dubai and Sharjah. Containers ME placed waiting areas, ticket shop and sanitary units with sewage and Water tanks. This setup is fully powered by generators.

Area

105 m2, 7 Units

Room solutions

Male and Female Waiting Rooms, Staff and Security offices, Ticket Booth, Toilet facilities





MORE
VIEWS



PREMIUM TOILETS

**RAS TANURA MUNICIPALITY
KINGDOM OF SAUDI ARABIA**

Key Facts

The Eastern province municipality had planned to create toilet facilities for Ras Tanura Municipal park.

Area

36 m2, 2 Units

Room solutions

Male and Female Toilet units



LIVING QUARTERS

**ZAKAT TAX AND CUSTOMS AUTHORITY
KINGDOM OF SAUDI ARABIA**

Key Facts

The client was in requirement of a Police Camp to serve the Salwa Border Patrol for FIFA world Cup, Qatar. CME has successfully executed this time sensitive project in just 76 days.

Area

2,220 m2, 148 Units

Room solutions

Living Rooms with toilet and shower.



MORE
VIEWS
FROM
LIVING
QUARTERS



ADMIN BUILDING

WINNERS FOOTBALL ACADEMY KINGDOM OF SAUDI ARABIA

Key Facts

The private end user was in need for a quick solution to accommodate their students and training staffs.

Area

195 m2, 13 Units

Room solutions

Administrative building



ICE CREAM KIOSK

WALDOF ASTORIA

PALM JUMEIRAH, DUBAI

Key Facts

Premium hotel group was having a requirement of an ice cream booth in one of their prime beach hotel resort in the Palm Jumeirah, Dubai

Area

15 m2, 1 Units

Room solutions

Ice Cream Booth and beach



MOBILE RADIO BROADCAST STATION

ARABIAN RADIO NETWORK

DUBAI

Key Facts

This major Media group requested us for a mobile Radio Station. We have been successfully developed a portable design. Currently we have completed 5years of rental contract with them with installations in various parts with the United Arab Emirates

Area

60 m2, 4 Units

Room solutions

G+1 Mobile studio



VARIOUS LOCATIONS IN DIFFERENT LOOK



MEDIA OFFICE

ZAIN TELECOM
STATE OF KUWAIT

Key Facts

This major Media group in the State of Kuwait had requested us for an Office Set up. We have been successfully completed this project within no time.

Area

240 m2, 16 Units

Room solutions

G+1 Office and Display





MORE VIEWS
MEDIA OFFICE

PREMIUM MAJLIS

AL MANIE GROUP
INTERNAL





MORE VIEWS
FROM
PREMIUM
MAJLIS



PUBLIC RESTROOMS

**DEPARTMENT OF MUNICIPALITIES &
TRANSPORT, ABU DHABHI, UAE**

Key Facts

DMT offered toilet facilities for their public park in Al Khaleej Al Arabi Street, Abu Dhabi.

Area

30 m2, 2 Units

Room solutions

Premium Toilet Facilities



MORE
VIEWS



PUBLIC BUS STATION

**ROADS AND TRANSPORT AUTHORITY
GOVERNMENT OF SHARJAH**

Key Facts

The government entity requested CME to design facilities for their Public Bus Station.

Area

105 m2, 7 Units

Room solutions

Waiting Rooms, Offices, Ticket Counter, Male & Female Toilets



CYCLE TRACK FACILITIES

**DEPARTMENT OF MUNICIPALITIES &
TRANSPORT, ABU DHABHI, UAE**

Key Facts

Department of Municipalities and the Main Contractor was planning for a support facility for Cycling Track in Al Wathbah Desert Camp. CME has designed a fabulous creation and delivered this project in 2021.

Area

300 m2, 20 Units

Room solutions

Bike Maintenance Workshop, Offices, Toilets, First Aid Room, Storage Room and Cafeteria.





MORE
VIEWS FROM
CYCLE TRACK
FACILITIES





ZUBAIR TOLL PLAZA RTA-SHARJAH-UAE-2021

Facts:

- Toll Office-G+1

Includes:

- Mosque
- Fully equipped Office
- Cafeteria
- Area: 135m²



SHORT VIDEO-ZUBAIR TOLL PLAZA-SHARJAH



BIKE RENTAL OFFICE & WORKSHOP

HELLO BIKE

AL QUDRA CYCLE TRACK, DUBAI

Key Facts

This private client accidentally met with our sales team while they were planning to enlarge their office space. CME has designed and executed the project in the year 2022.

Area

135 m2, 9 Units

Room solutions

G+1 Office and Workshop





H
E
L
L
O



B
I
K
E



OTHER PROJECTS



OTHER PROJECTS



OTHER PROJECTS



OTHER PROJECTS



CLIENTALE



مركز دبي التجاري العالمي
DUBAI WORLD TRADE CENTRE



حكومة الشارقة
GOVERNMENT OF SHARJAH
هيئة الطرق والمواصلات Roads & Transport Authority



بلدية مدينة أبوظبي
ABU DHABI CITY MUNICIPALITY



هيئة الزكاة والضريبة والجمارك
Zakat, Tax and Customs Authority



أمانة المنطقة الشرقية
Eastern Province Municipality



الشركة الأحمدية للمقاولات والتجارة شركة مقفان
Ahmadiah Contracting & Trading Co. K.S.C.

For more information, please contact;

Containers Middle East FZCO

PO Box 263905, Plot S50914B

Jebel Ali Free Zone South

Dubai, United Arab Emirates

Tel: **+971 4 880 7015**

Email: info@containers-me.com

